



**PURE ENJOYMENT OF A  
BETTER LIFE STARTS HERE**



# WELCOME

A pure, sparkling pool in three easy steps

What could be more fun than owning your own swimming pool? Whether you like to do laps, splash about, play a game of Marco Polo or just laze about by the edge, a swimming pool can bring us lots of joy.

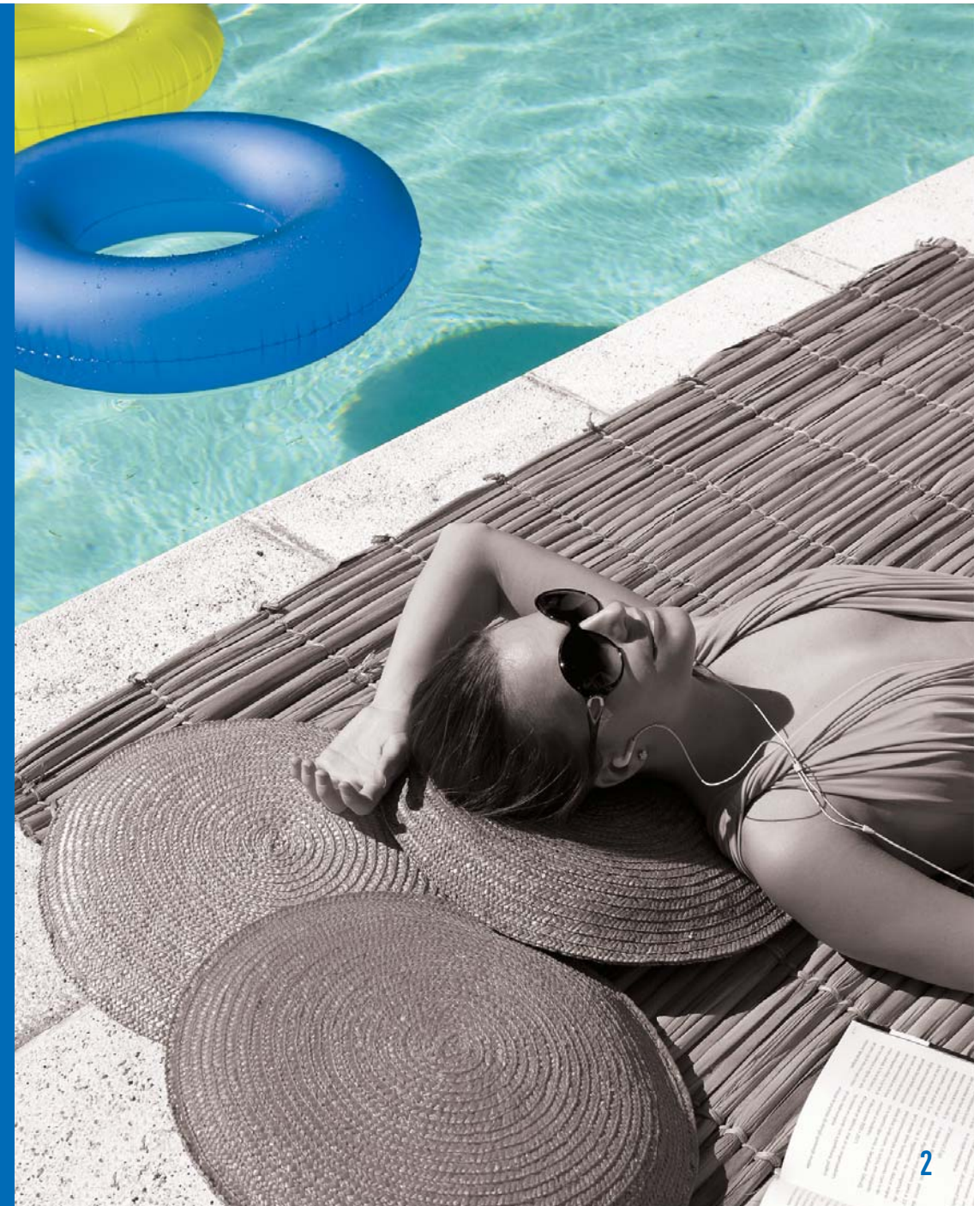
To get the most enjoyment out of your pool, you need to look after it carefully. That's where the Zodiac Chemicals complete pool care system comes in.

In just three easy steps, you'll be enjoying a cleaner pool with more sparkle.

**STEP 1**  **PURE BALANCE**

**STEP 2**  **PURE PROTECTION**

**STEP 3**  **PURE PERFECTION**





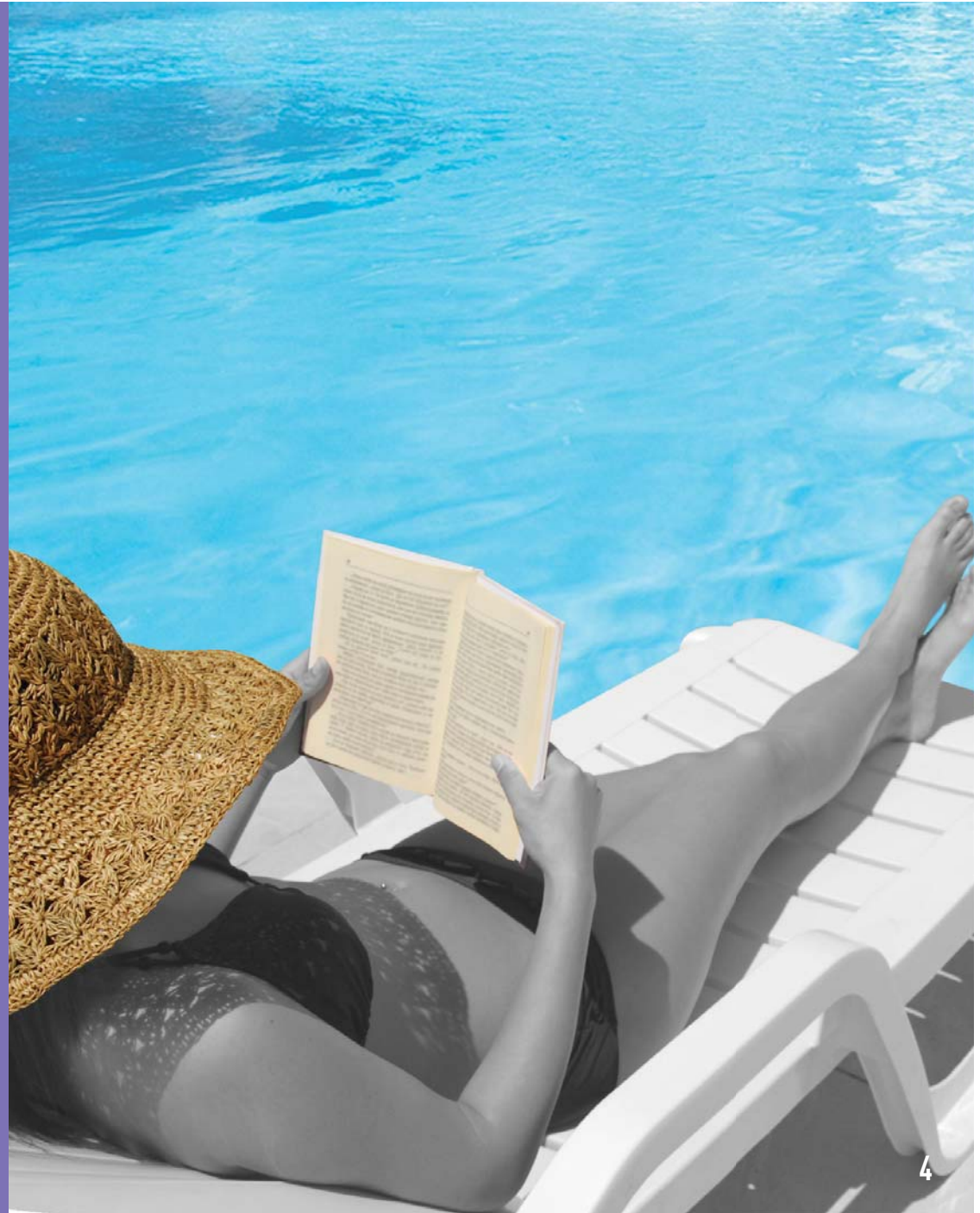
# HARMONY BEGINS HERE

## STEP 1 PURE BALANCE

**Just like people, pools need balance. In pool-speak, balancing means preparing the water so that the protective products you add later will work most effectively. Why is this important?**

Firstly, if your protective products aren't doing their job properly, your pool can be over-run by nasty micro-organisms. Secondly, unbalanced water may be corrosive, resulting in damage to the equipment in your pool.

Also, the water balance should be in harmony with the human body, with a pH level between 7.2 and 7.6. This keeps the water pleasant while preventing eye and skin irritation.





# I'LL KILL THE GREMLINS

## STEP 2 PURE PROTECTION

Nobody likes nasty micro-organisms crashing their pool party. To protect your pool from unwanted guests and to keep your water nice and clean, use purifying or protective products.

The key ingredient in protective products is Chlorine, a common and the most widely used element to purify and eliminate harmful micro-organisms from our drinking water.

By adding purifiers to a well-balanced pool, effective protection against bacteria, algae and other harmful micro-organisms can take place.

Ensure your pool stays clean by regularly checking the levels of protective products and stabilisers in the water. For even greater protection, use shock treatments regularly.

Stabilisers guard the purifiers or protective products from UV rays. UV protection is essential simply because without it, purifiers evaporate from the pool.

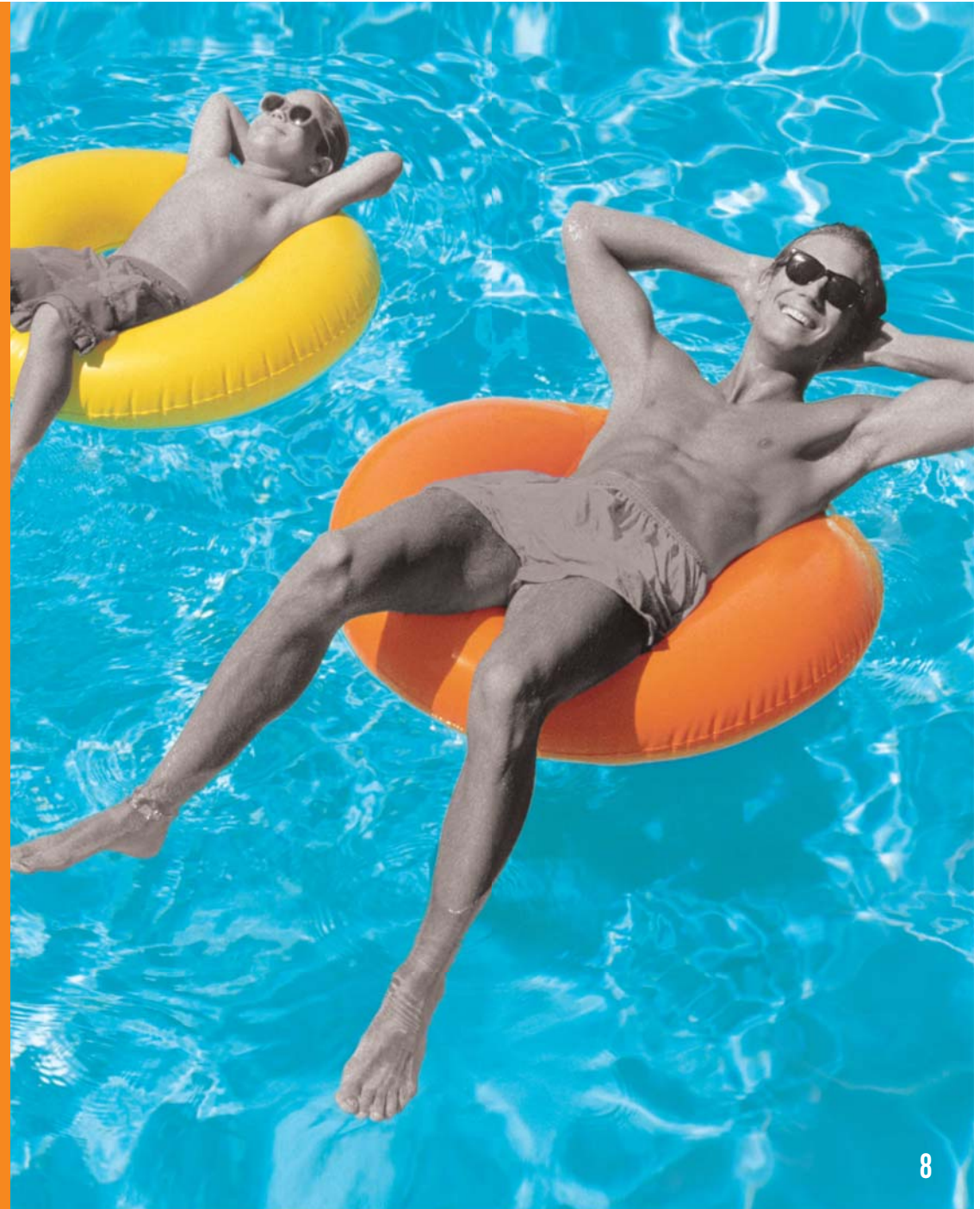




# I'LL MAKE IT SPARKLE

## STEP 3 PURE PERFECTION

After you've taken care of unwanted guests, it's time to focus on the important stuff: making your pool glisten and sparkle. Zodiac Chemicals offers a range of products designed to perfect your pool. Just don't spend too much time admiring the water, okay?



# LABELS YOU CAN READ

## Choosing chemicals should be simple

### 1 PRODUCT NAMES THAT MAKE SENSE

Simple, self-explanatory name that everyone can understand.

### 2 BENEFITS THAT HELP YOU

A summary of the key product features and benefits, so you can see at a glance if it's the right product for you.

### 3 A DESCRIPTION YOU CAN UNDERSTAND

A simple snapshot of what the product does.

### 4 A SIMPLE SCALE OF STRENGTH

Sometimes you need a big boost, and sometimes only a mild solution. This scale indicates clearly which product will best suit your needs.

### 5 DESIGNED TO BE EASIER TO FIND

The category symbols and colour coding are designed to make it easier to find the right product or products on the shelf.

- - Balance
- ⊗ - Protection
- - Perfection

### 6 TECHNICAL STUFF (ACTIVE CONSTITUENTS)

All our products meet or exceed Australian standards and compliance. This information, when included, is your peace of mind of a safe and trusted product. It lists clearly the active ingredients.





## TROUBLE SHOOTING

As much as we love our pools, finding time to maintain them can be hard. This can lead to problems like algae formation, murky water and staining. Fortunately, there are easy solutions that will restore your pool to its former glory in no time.

### THE GOOD, THE BAD & THE ALGAE

There's nothing pretty about algae in your pool. For those who skipped science class, algae are plant-like single cell micro-organisms that are present in the air and spread by wind and rain.

In swimming pools, algae can form when protective products or Chlorine levels are too low.

Once algae have formed in the pool, you should start the 3-step process again. Below are step-by-step instructions to get rid of the three most common forms of algae.

Good riddance!



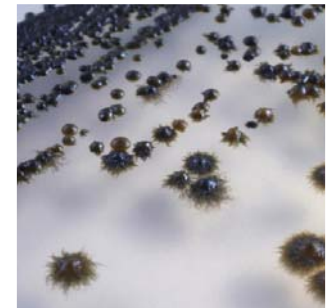
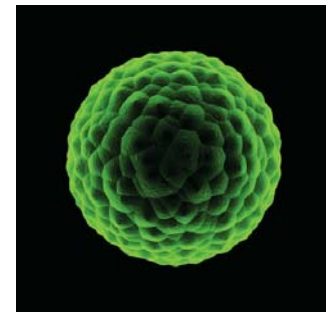
### BLACK SPOT ALGAE

Pirates may fear the dreaded black spot, but Black Spot algae is easily taken care of. Black Spot algae appear in all areas of your pool. A real troublemaker, they form protective layers that makes them resilient to chlorine.

1. Check the pH level of the pool to make sure it's between 7.2 and 7.6, then boost the chlorine levels using Pool EZY Purifier.
2. Turn the pump off to stop water flow to ensure more accurate targeting.
3. Brush the affected areas vigorously to remove the protective coating from the algae. Add Pool Blackspot Remover or All In One Pool Algaecide directly on top of the affected area and leave overnight.
4. Vacuum those pesky particles to waste, then use EZY Natural Clarifier to bring the sparkle back.

For an additional preventative measure, add Phosphate Remover and EZY Natural Clarifier.

Note: Black Spot Treatment contains chlorine. If using large amounts due to severe infestation, check the chlorine levels after the treatment, then boost if necessary.





## TROUBLE SHOOTING

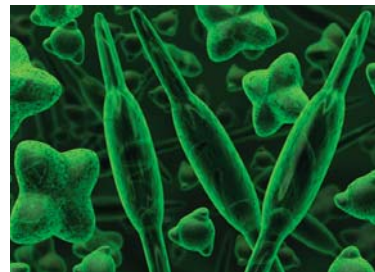
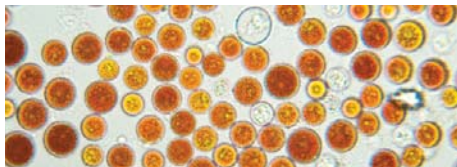
### MUSTARD ALGAE

Mustard algae have a yellow, powdery appearance and tend to thrive in the shady part of the pool – an appropriate spot for scum to hang out. Like Black Spot algae, they have protective layers and are therefore more resistant to chlorine.

1. Check the pH level of the pool to make sure it's between 7.2 and 7.6, then boost the chlorine levels using Pool EZY Purifier.
2. Turn the pump off to stop water flow to ensure more accurate targeting.
3. Brush the affected areas vigorously to remove the protective coating of the algae. Add All In One Pool Algaecide directly on top of the affected area and leave overnight.
4. If your pool is cloudy, it means that there are lots of suspended dead algae cells in the pool. Use Power Clarifier Liquid or EZY Clarifier to send them straight to the pool's floor. (Refer to Murky and Cloudy Water treatment guide)
5. Vacuum those pesky particles to waste, then use EZY Natural Clarifier to bring the sparkle back.

For an additional preventative measure, add Phosphate Remover and EZY Natural Clarifier.

Note: All cleaning equipment should remain in the pool when treating to prevent reinfestation.



### GREEN ALGAE

Green algae grow fast and can turn a pool green overnight. You'll want to get rid of it just as fast.

1. Start by ensuring the pH level of your pool is between 7.2 and 7.6, then boost the chlorine levels using protective products like Pool EZY Purifier.
2. Add All In One Pool Algaecide to the pool and leave overnight.
3. If your pool is cloudy, it means that there are lots of suspended dead algae cells in the pool. Use Power Clarifier Liquid or EZY Clarifier to send them straight to the pool's floor. (Refer to Murky and Cloudy Water treatment guide)
4. Vacuum those pesky particles to waste, then use EZY Natural Clarifier to bring the sparkle back.

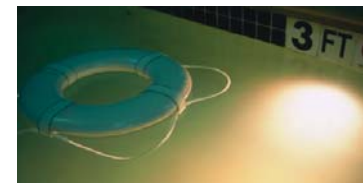
For an additional preventative measure, add Phosphate Remover and EZY Natural Clarifier.

### MURKY & CLOUDY WATER

When it comes to swimming, the only thing worse than a cloudy day is a cloudy pool. Fortunately, cloudy water is easily cleared up.

Always check the pH level of the pool to make sure it's between 7.2 and 7.6, then boost the chlorine levels using Pool EZY Purifier if necessary.

1. If your pool is a bit cloudy and the bottom is visible, this can be fixed with EZY Natural Clarifier or EZY Clarifier.
2. If your pool is very cloudy and you can't see the bottom, it means there are lots of suspended particles or dead algae cells in the pool. Use Pool Clarifier Liquid to send them straight to the pool's floor.
3. Vacuum those pesky particles to waste, then use EZY Natural Clarifier to bring the sparkle back.



### STAINING

Just like your favourite t-shirt, a pool can become the victim of an unsightly stain. They are either caused by metals such as iron, copper or manganese entering the pool water or organic matter such as pigments from plants which have accumulated in the pool.

1. Start by ensuring the pH level of your pool is between 7.2 and 7.6.
2. Add All In One Stain Remover.
3. Should the stain be metal based then the addition of Metal Remover is required.
4. When the treatment is complete, ensure that the pH level is between 7.2 and 7.6.

Note: All In One Stain Remover will only lift stains. Metal Remover will remove the metals to the filter and ultimately out of the pool.

Stains in Fibreglass pools could also be caused by Osmosis. Should this be the cause of the stain then the use of Fibreglass Stain Remover is recommended.

## TESTING THE WATERS

When it comes to testing your water you should be testing weekly with Zodiac's 3 in 1 Insta Test strips. A full test should also be done by your Pool Professional monthly to check your Calcium, Stabiliser (cyanuric acid) and Phosphate levels.

There are four tests that you or your pool shop should perform regularly:

<b>pH Level</b>	The pH test measures the acid or base condition of the water. Balancing means preparing the water so that the protective products you add later will work most effectively. Why is this important? Firstly, if your protective products aren't doing their job properly, your pool can be over-run by nasty micro-organisms. Secondly, unbalanced water may be corrosive, resulting in damage to the equipment in your pool. Also, the water balance should be in harmony with the human body, with a pH level between 7.2 and 7.6. This keeps the water pleasant while preventing eye and skin irritation.	Test every few days during peak season.	To decrease pH use pH Down (Acid). To increase pH use pH Up or Alkalinity Up.
<b>Total Alkalinity</b>	Total alkalinity measures the level of sodium bicarbonate or alkalinity products (base soda) in the water. Maintaining (stabilizing) the correct pH is dependent on total alkalinity. Your goal is to keep it between 80-120ppm.	Test at least monthly.	To increase pH use pH Up or Alkalinity Up. To decrease pH use pH Down (Acid).
<b>Free Chlorine</b>	Chlorine is the most widely used element to purify the water and eliminate harmful micro-organism such as bacteria and algae. It occurs in two forms: free chlorine and combined chlorine. Free chlorine is the 'active' purifier; combined chlorine is a by-product that gives off the strong chlorine smell but is far less effective in fighting bacteria. Your target free chlorine level should be 1-3ppm (parts per million).	Test every few days during peak season.	We recommend the use of Pool EZY Purifier as a safe, effective, easy to use purifier for your pool.
<b>Calcium Hardness</b>	Calcium is the most abundant mineral in the pool. Calcium Hardness is the measure of dissolved calcium compounds in the water. If there is low calcium in the water then the water will try to take it from the surface and equipment, which will cause erosion. A high calcium level can cause cloudy water or scale formation. Calcium should be between 200-400ppm.	Test monthly	Use Calcium Down or Calcium Up to adjust calcium levels in your pool water.

## A FEW TIPS

### TAKE IT NICE AND SLOW

As exciting as pool tests are, speed it along and you won't get a good result. Most chemicals have an impact on each other and you need to give them time to settle. So make adjustments to your pool water slowly and give them time to take effect.

### CHEAP CHEMICALS ARE A BIG NO-NO

Don't cheapen the enjoyment you get from your pool. Always use reputable brand-name chemicals, as cheaper products often contain impurities (such as metals) that can stain or even damage pool equipment. They also don't work as hard as quality products, meaning you have to buy more to get effective results.

### THE SNIFF TEST

If the correct levels of purifiers are present in the pool, it will have no smell. If a smell is evident, it is probably due to the presence of chloramines or too little free chlorine.

### OWN A FIBREGLASS POOL?

Fibreglass pool owners take note: you should keep your pH lower (most manufacturers recommend it should be at 7.0). If you own a Quartz pool, it's recommended that you keep your pH levels at 7.4. Speak to your builder or manufacturer for more information.



## CHLORINE GENERATORS MAKE IT EASY

### What are the benefits?

With a Zodiac chlorine generator you no longer need to purchase, transport, store or manually add liquid chlorine as part of your routine maintenance. You simply add salt to the pool and let the automated machine do all the work for you. The salt levels found in your pool will be much lower than levels found naturally in a human tear drop.

**MYTH BUSTER** Chlorine Generators don't produce salt as commonly believed. They produce chlorine to purify the pool water.

### What's the difference between Zodiac Ei vs TRI?

Zodiac's Ei is a fantastic, easy to use, simple to maintain product for pool owners looking to convert to a salt water pool. Suitable for smaller pools, Ei will provide automated chlorination at a great price; it is perfect for budget conscious pool owners looking for a healthier, safer alternative to manually dosing liquid chlorine.

Zodiac's TRI water care system represents the pinnacle in chlorination. It has many sophisticated features and functions to keep your pool perfectly purified. Its intelligent inbuilt software includes automatic diagnostic tools that will monitor the pool water chemistry and alert you of any problems.



### PERFECT BALANCE WITH TRI PH

**Maintaining the pH of your pool water is one of the most important aspects.**

In pool-speak, balancing means preparing the water for effective purification. Also, if the pH is too low the water will become acidic and corrosive, if it's too high the water will irritate your skin and eyes and become cloudy.

There are a number of factors that can disrupt the delicate pH balance of your pool water such as: heavy rain, the type of water

you use (e.g. bore), bather loads, wildlife, even the surface type of your pool – all of these factors can contribute to fluctuation of pH levels in your pool water.

Imagine that you had a product that not only purifies your pool, it also monitored the pH balance and adjusted it automatically?

Zodiac's TRI-pH automatic water care system does exactly that. This intelligent system uses a series of sensors, feeders and a high performance saltwater chlorine generator to keep watch over your pool and spring into action when needed. The end result; pool water that is in perfect balance all summer long.

### NATURE2

#### A luxurious water experience

Transform your pool into a crystal clear sanctuary with Zodiac's revolutionary Nature2 mineral purifier. Nature2 is a natural, mineral-based pool and spa water purifier that works together with chlorine to dramatically improve the look, feel and smell of your pool water. Once you glide through the silky smooth water of a Nature2 pool or spa, you will instantly feel and see the difference.

Nature2 Express - allows you to bring the benefits of mineral technology to your existing pool with a quick, do-it-yourself installation. Easy installation, Nature2 simply attaches to the plumbing of most in ground and above ground pool systems. Installed in over 300,000 pools worldwide Nature2 will ensure your swim experience is clean, fresh, and gently soothing.

Nature2 Spa - uses patented technology to destroy bacteria in your spa, reducing chlorine requirements.



Simply slip into your spa filter for safe, sparkling water that lasts up to four months.

**Handy Hint:** A strong chlorine smell usually means there is not enough chlorine in the water – not too much.

**And if you have any doubts or questions, we strongly recommend you contact your local Pool Professional.**



## TOUGH MEETS SMART

The Zodiac FloPro ePump pool pump has it all. It's tough enough to withstand harsh conditions. And it's smart enough to come with an adjustable 8-speed controller that saves energy and money. For a pool pump with brains and brawn visit [zodiac.com.au](http://zodiac.com.au) or an authorised Zodiac dealer.



## BARACUDA<sup>®</sup> MX8<sup>™</sup> HIGH PERFORMANCE CLEAN

**Make debris a thing of the past with the new Baracuda MX8 from Zodiac. Designed to take on the toughest of pools; the MX8 is a mechanical turbine driven suction cleaner that cleans faster and more aggressively than anything else in its class.**

Engineered with sleek and sporty good looks, the Baracuda MX8 glides effortlessly through the water.

Cyclone vacuum technology captures maximum debris whilst maintaining maximum cleaning power. The wider cleaning path and 20% larger debris inlet provides a more efficient clean.

At the heart of the MX8 is the Flex Power Turbine providing maximum torque whilst operating at low flow; ensuring a high performance clean every time!

Backed by a hassle free two years warranty, the new Baracuda MX8 is unlike anything you have ever seen before!



CONTINUOUS CYCLE



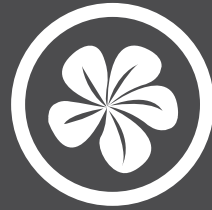
ADVANCED MOBILITY



WIDE PATH CLEANING



HYPER GRIP TRACTION

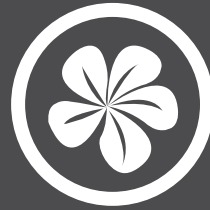


# PURE INDULGENCE BEGINS HERE

## The perfect spa in three easy steps

Aaaaaaaah. If you own a spa, that's a sound you should be very familiar with. Spas are all about taking it easy, so we've made looking after your spa nice and simple. As with swimming pools, you'll need to use the *Zodiac Chemicals* complete spa care system to keep your spa sparkling.





## 3 EASY STEPS TO A PERFECT SPA

### STEP 1 PURE BALANCE

Just like people, spas need balance. In spa-speak, balancing refers to preparing the water so that the protective products you add later will work effectively. Why is this important? Firstly, if your protective products aren't working effectively, your spa can be over-run by nasty micro-organisms. Secondly, unbalanced water may be corrosive, resulting in damage to the equipment in your spa.

Also, a balanced spa should be in harmony with the human body (sharing the same pH level), which makes the water more pleasant. Huzzah!

### STEP 2 PURE PROTECTION

Everyone enjoys a good spa. Unfortunately, this also applies to nasty micro-organisms. Keep them away with protective products.

By adding purifiers to a well-balanced spa, effective protection against bacteria, algae and other harmful micro-organisms can take place.

Ensure your spa stays clean by regularly checking the levels of protective products in the water.

### STEP 3 PURE PERFECTION

After you've taken care of unwanted guests, it's time to focus on the important stuff: making your spa glisten and sparkle. Zodiac Chemicals offers a range of products designed to perfect your spa. Just don't spend too much time admiring the water, okay?

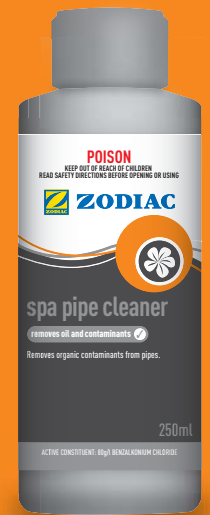
## PURE BALANCE



## PURE PROTECTION



## PURE PERFECTION





For more information visit [zodiac.com.au](http://zodiac.com.au) or call **1800 688 552**

