

AQUA X 20

by FAIRLAND



Exclusive to Pool Systems - a POOLCORP Company

Tel: 1300 366 020

Website: poolsystems.com.au

Email: sales@poolsystems.com.au

Address: 27 Strathwyn St Brendale, 4500 QLD



TurboSilence[®] 20

Redefine the Industry Standard



TurboSilence 20
Control System



Lightning Heat
Exchanger



COP 20



20 Times Quieter

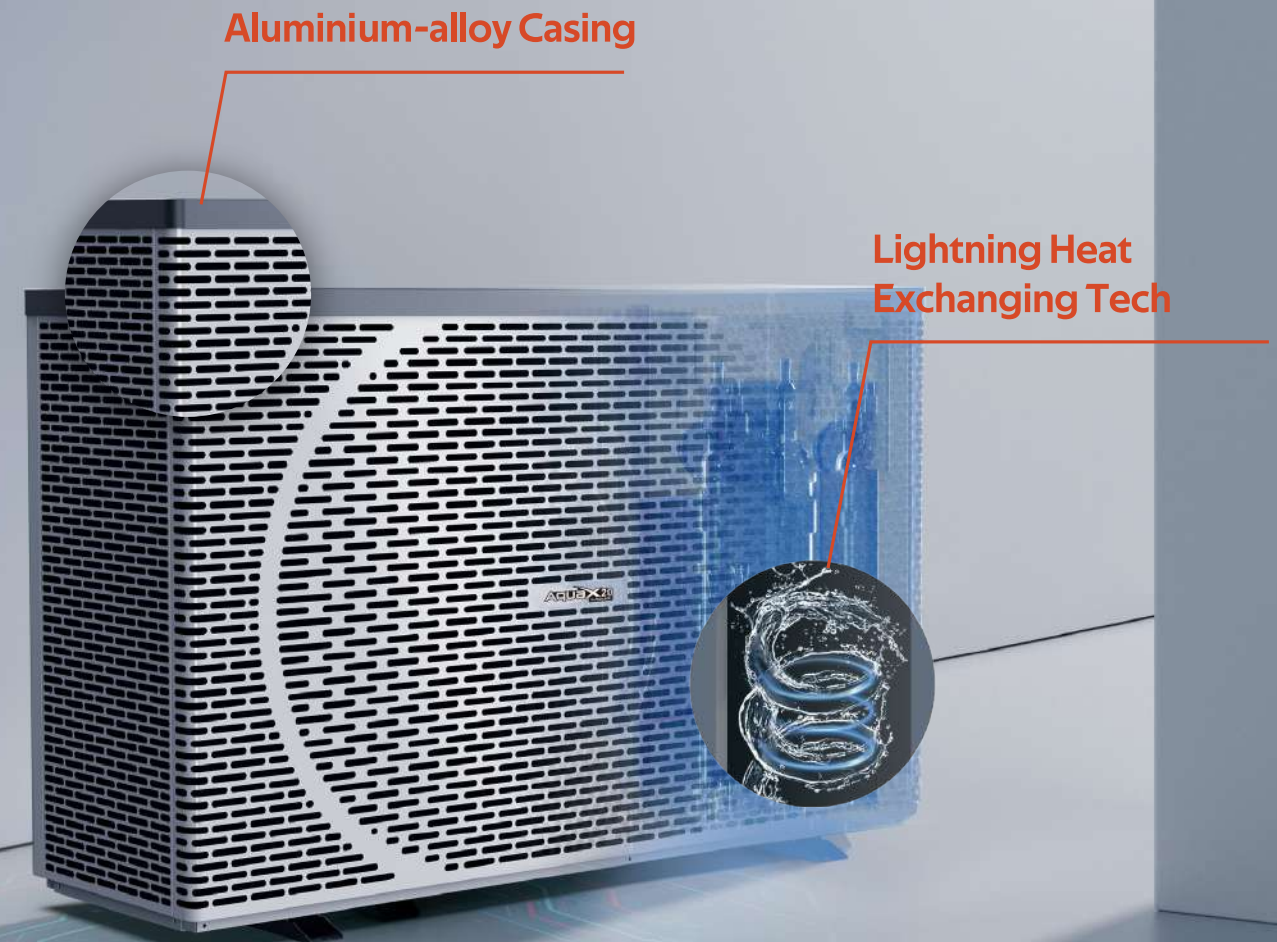


43°C Operation

The TurboSilence Full-inverter builds on Fairland's pioneering Full-inverter technology, driven by an advanced, proprietary control system. This innovation seamlessly aligns the inverter compressor with Fairland's high-efficiency 3D heat-exchange technology. Its unique capability to intelligently adjust gas flow rates ensures optimal COP (Coefficient of Performance), maximizing energy efficiency and performance

Lightning Heat Exchanging Tech

The next-generation Lightning Heat Exchange Technology redefines titanium heat exchanger design, expanding the exchange surface area by 30% and enhancing efficiency by an equivalent 30%.



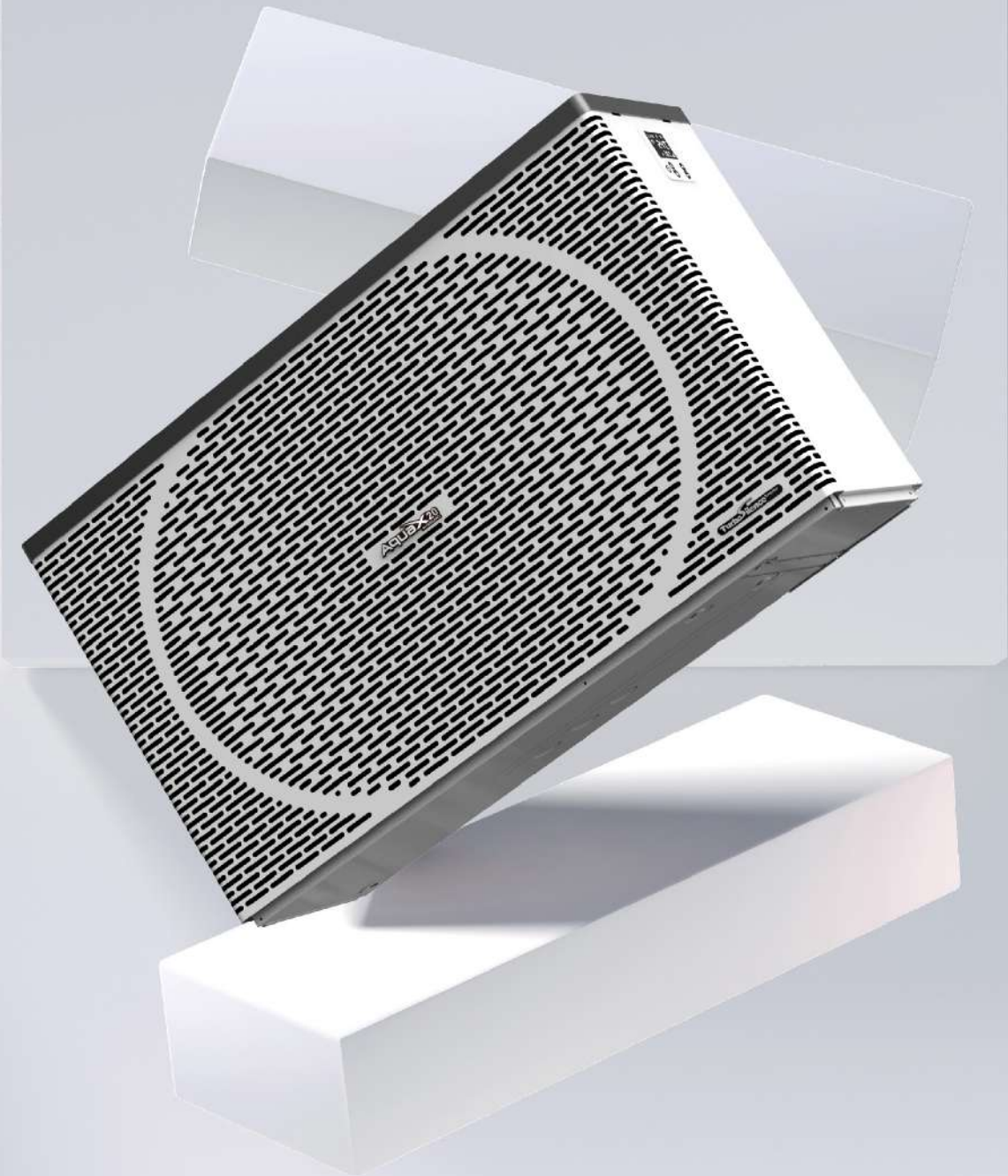
REDEFINE ULTIMATE EXPERIENCE

20 X Energy Saving

COP20, 30% higher than standard

20 X Quieter

Outstanding decibel rating of 36.6 dB(A)
The compressor and the fan work at a very low speed while maintaining temperature, reducing the noise level to around 36.6 dB(A) at 1m.

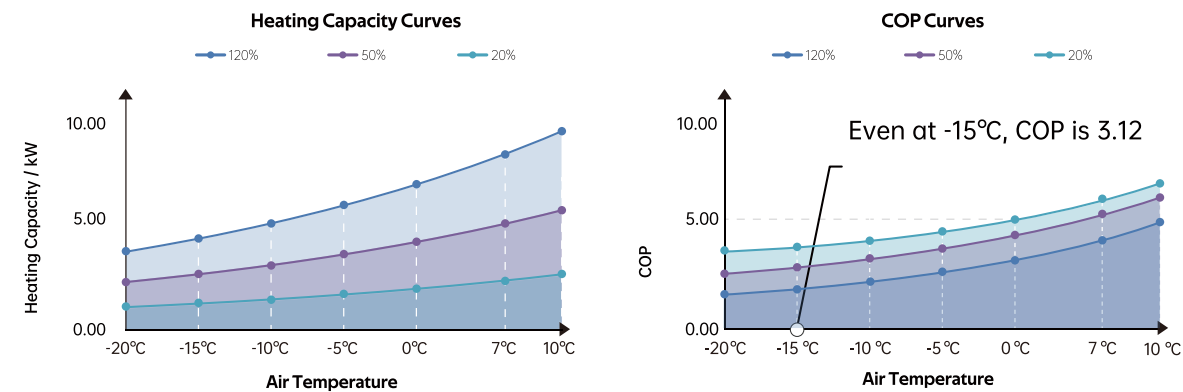


Cool Your Pool at 43°C

Operating at Extreme Temperature 43°C



Excellent Low Temperature Performance



Example Model: AX20-60C

SPECIFICATIONS OF AquaX20 BY FAIRLAND

Model	AX20-35C	AX20-40C	AX20-50C	AX20-60C	AX20-65C	AX20-75C	AX20-90C	AX20-90CT	AX20-105C	AX20-105CT	AX20-120CT	
Advised pool volume (m ³)	18-35	25-40	30-50	35-60	40-65	45-75	55-90	55-90	65-105	65-105	75-120	
Operating air temperature (°C)	-20-43											
SCOP	8.9	8.7	8.6	8.7	8.6	8.8	8.9	8.7	8.4	8.4	8.5	
Performance Condition: Air 26°C, Water 26°C, Humidity 80%												
Heating capacity (kW) in Turbo mode	9.0	11.0	13.5	16.0	18.0	21.5	26.0	26.0	31.5	31.5	40.0	
Heating capacity (kW) in Smart mode	7.5	8.5	11.5	13.5	15.0	17.6	22.0	22.0	27.0	27.0	35.0	
COP	19.2-7.0	20-7.3	19.6-7.5	20.1-7.1	19.2-7.1	20.5-7.2	20.3-7.2	19.0-7.2	19.6-7.4	19.6-7.4	19.2-7.2	
COP at 50% capacity	14.3	14.7	14.9	14.8	14.6	15.0	15.0	15.0	14.8	14.8	14.7	
Performance Condition: Air 15°C, Water 26°C, Humidity 70%												
Heating capacity (kW) in Turbo mode	6.0	7.3	9.0	10.5	12.0	14.5	18.0	18.0	22.0	22.0	28.5	
Heating capacity (kW) in Smart mode	5.0	6.1	7.3	8.8	10.0	12.0	14.8	14.8	18.0	18.0	24.0	
COP	7.8-5.0	8.5-5.5	7.9-5.2	8.8-5.2	8.0-5.0	8.8-5.2	9.3-5.3	9.1-5.3	8.1-5.3	8.1-5.3	8.0-4.9	
COP at 50% capacity	7.0	7.3	7.2	7.5	7.2	7.4	7.8	7.8	7.4	7.4	7.4	
Performance Condition: Air 7°C, Water 26°C, Humidity 90%												
Heating capacity(kW) in Turbo mode	4.9	6.5	7.2	9.0	10.3	11.6	15.2	15.2	17.5	17.5	22.3	
COP	6.9-4.4	7.0-4.8	6.9-4.5	7.0-4.5	6.9-4.3	7.2-4.4	7.1-4.6	7.0-4.4	7.1-4.6	7.0-4.4	7.0-4.3	
Performance Condition: Air 35°C, Water 28°C, Humidity 80%												
Cooling capacity (kW)	4.3	5.0	6.3	9.0	10.0	11.3	13.0	13.0	15.0	15.0	19.5	
Sound pressure at 1m dB(A)	36.6-43.4	37.7-44.8	37.8-45.9	41.0-46.7	41.5-47.3	41.9-49.5	39.7-49.8	39.7-49.8	42.1-50.3	42.1-50.3	41.5-50.5	
Sound pressure of 50% capacity at 1m dB(A)	37.6	38.8	40.3	42.7	42.5	43.3	43.1	43.1	45.2	45.2	42.5	
Sound pressure at 10m dB(A)	16.6-23.4	17.7-24.8	17.8-25.9	21.0-26.7	21.5-27.3	21.9-29.5	19.7-29.8	19.7-29.8	22.1-30.3	22.1-30.3	21.5-30.5	
Compressor	Twin-rotary Mitsubishi DC-inverter											
Heat exchanger	Lightning heat exchanger											
Casing	Aluminum-alloy Casing											
Power supply	230V~/1 Ph/50Hz							400V/3 Ph/50Hz	230V/1 Ph/50Hz	400V/3 Ph/50Hz		
Rated input power at air 15°C (kW)	0.14-1.25	0.15-1.38	0.19-1.7	0.20-2.08	0.25-2.45	0.27-2.74	0.32-3.31	0.32-3.31	0.46-4.1	0.46-4.1	0.60-5.7	
Rated input current at air 15°C (A)	0.61-5.43	0.65-6.00	0.83-7.39	0.87-9.04	1.09-10.65	1.17-11.9	1.39-14.4	1.39-14.4	0.46-4.78	2.01-17.8	0.66-5.91	
Advised water flux(m ³ /h)	2-4	2-4	3-4	4-6	4-6	6.5-8.5	8-10	8-10	10-12	10-12	12-18	
Water pipe in-out size (mm)	50											
Net Dimension LxWxH (mm)	910×432×660	910×432×660	945×432×660	1045×432×660	1045×432×660	1195×432×760	1072×536×956	1072×536×956	1264×536×956	1264×536×956	1364×536×956	
Net weight (kg)	63	63	65	72	73	82	100	111	122	132	147	
Qty per 20'FT / 40'HQ (sets)	78/168	78/168	78/165	72/150	72/150	40/135	34/72	34/72	32/66	32/66	26/64	

* The advised pool volume indicated applies under following conditions: Swimming pool is well covered; system runs at least 15 hours per day;
 * The final specs will be in accordance with the specs on the product.

