

OWNER'S MANUAL



onga[®]

Pentair Water



For the Installation, Operation and Service of

Dominator Submersible Pump

**An earth leakage or residual current protection device
must be fitted to all installations**

Should the installer or owner be unfamiliar with the correct installation or operation of this type of equipment you should contact the distributor/manufacture for the correct advice before proceeding with the installation or operation of this product.

Relax - you've bought an **ongá** ...

Congratulations on your decision to purchase an Onga product. Onga is one of the best know brands in its field, with a proud local and international reputation.

Onga is a brand for reliability, value for money and technological innovation. You will find Onga product wherever people need to move water in 3 broad markets covering:



Technologically advanced solutions for moving and treating water in the Home, Garden, Pool and Spa.

Residential



Innovative Stock and Crop water management solutions for Primary Industries.

Agricultural



Water movement products for Building services, Emergency services and Original Equipment Manufacturers.

Process

1. Continual Product Improvement

We employ the best engineers both in Australia and around the world to develop new and better ways to take water further.

2. Operational Excellence

There is only one standard that we set ourselves for both product quality and the quality of our service. That standard is excellence... to have no-one better than us at what we do... nothing short of that is acceptable. Our commitment to quality is reinforced with our ISO accreditation.



3. A Fair Price

Onga products are neither the cheapest nor the most expensive in their field. Our products do, on the other hand, always represent very good value for money; they always have and they always will.

4. Our Team of Dealers

The hand picked authorised Onga dealer network throughout Australia and worldwide are second to none. We invest considerable time and resources training and supporting them through the Onga Training Academy.

Pentair Water warrants that, when this product is used for the purpose it was designed, is correctly housed and vented against weather, vermin, dust etc., that it will be free of material and manufacturing defects at the time of the original purchase.

This warranty is limited to the cost of the product and does not cover third party costs including the costs of electricians, plumbers, etc. unless authorised by Pentair Water.

TERMS AND CONDITIONS APPLICABLE IN AUSTRALIA AND NEW ZEALAND

- 1) YOU SHOULD CAREFULLY READ THE INSTRUCTIONS SUPPLIED PRIOR TO USING THIS PENTAIR WATER PRODUCT.
This product is to be installed and operated in accordance with the instructions provided.
This warranty will not apply if it is used in a manner other than in accordance with the instructions.

What the warranty covers:

Pentair Water warrants its products to be free of defects in material and workmanship during the warranty period. If a product proves to be defective in material or workmanship during the warranty period, then Pentair Water will, at its sole option repair or replace the product with a like product. Replacement product or parts may include re-manufactured or refurbished parts or components.

How long the warranty is effective:

- 1) This Pentair Water product is warranted for 24 months for all parts from the date of the first consumer purchase.
- 2) Where this Pentair Water product is sold for commercial application as defined in the relevant Trade Practices and Consumer Protection legislation the warranty shall be for a period of six months from the date of purchase by the end user.
- 3) Ancillary equipment including but not limited to plastics and metal fittings, electrical controls (including touch pads), bladders, pressure switches, filter cartridges, pressure gauges, etc. shall be warranted for a period of twelve months only in relation to consumer applications.

Who the warranty protects:

This warranty is valid only for the consumer purchaser.

What the warranty does not cover:

- 1) Damage, deterioration or malfunction resulting from:
 - a) accident, misuse, negligence, fire, water, lightning, or other acts of nature, unauthorised product modification or failure to follow instructions supplied with the product;
 - b) repair or attempted repair by anyone not authorised by Pentair Water;
 - c) any damage to the product due to shipment;
 - d) removal or installation of the product;
 - e) causes external to the product such as electric power fluctuations or failure;
 - f) use of supplies or parts not meeting Pentair Water specifications;
 - g) normal wear and tear;
 - h) water ingress or exposure to abnormal corrosive conditions or "run dry" conditions;
 - i) any other cause which does not relate to a product defect.
- 2) Damage caused to the product as a consequence of use of another manufacturer's product used in conjunction with Pentair Water and affiliate companies.
- 3) This warranty does not cover such products as combustion engines, mechanical seals or other component parts of units not manufactured by Pentair Water, but where possible Pentair Water will make available to purchaser the benefit of any warranty of that manufacturer.
- 4) This guarantee does not cover underwater light bulbs, underwater lights will only be warranted if wiring is to approved standards, and an approved transformer incorporating thermistors has been used, running the light not submerged in water will void warranty.
- 5) Hydrostatic relief valve supplied separately or incorporated in products are sold with the express understanding that such products offer limited hydrostatic relief and no offer is made or implied as to the suitability of such products for a specific application as their condition at the time of sale are unknown and beyond Pentair Water's control. It is the responsibility of the installer to ensure that the performance of the valve meets the required application.
- 6) Swimming pools or spa equipment will not be warranted where the Langelier Saturation Index 'pH' range is outside 7.2 to 7.6 and they have not been regularly treated with chlorine or bromine based sanitising systems, or other recognised sanitising systems

Spare Parts:

Spare parts are usually stocked for a reasonable period of time following last production.

Pentair Water does not warrant that spare parts will be made available for the whole of the reasonable period and reserves its right to cease supplying spare parts or providing facilities for repair of spare parts in circumstances which are beyond its control including the requirement to remove spare parts from sale as a consequence of changes in the law or otherwise as it deems fit.

How to get service:

In Australia please contact 1800 664 266 In New Zealand please contact 0800 664 269
Claims under this warranty must give evidence of date of purchase, model and serial number of the product and the claimants name, address and telephone number.

- 1) To obtain warranted service, you will be required to provide to either Pentair Water state office or recommended service agent:-
 - a) the product;
 - b) confirmation in writing specifying the nature of your claim;
 - c) proof providing date of original purchase;
 - d) full contact details including name and address;
 - e) the serial number of the product if any.
- 2) The product is to be forwarded by the customer freight paid to Pentair Water.
Infield service by an authorised Pentair Water Service Agent will incur a travel, removal & reinstallation fee to adjudicate on warranty issues. Authorised warranty will be free of charge for the first 12 month period from date of the first consumer purchase.
- 3) Warranty service work will be denied or suspended, on equipment not readily accessible to service personnel, that is products that are behind barriers, tiled or bricked in, installed in roofs or second story external walls including inaccessible power points.
- 4) Any service of any product which is found to be faulty due to abuse, misuse or improper installation will be charged to the owner at the service agents current servicing hourly rate.

Limitation of implied warranties:

THERE ARE NO WARRANTIES, EXPRESSED OR IMPLIED, WHICH EXTEND BEYOND THE DESCRIPTION CONTAINED HEREIN INCLUDING THE IMPLIED WARRANTY OF MERCHANTABILITY AND FITNESS FOR A PARTICULAR PURPOSE.

Exclusion of damages:

PENTAIR WATER'S LIABILITY IS LIMITED TO THE COST OF REPAIR OR REPLACEMENT OF THE PRODUCT. PENTAIR WATER SHALL NOT BE LIABLE FOR:

- 1) Damage to other property caused by any defects in the product, damages based upon inconvenience, loss of use of the product, loss of time, loss of profits, loss of business opportunity, loss of goodwill, interference of business relationships, or other commercial loss, even if advised of the possibility of such damage.
- 2) Any other damages, whether incidental, consequential or otherwise.
- 3) Any claim against the customer by any other party.

Effective law:

This warranty gives you specific legal rights, and you may also have other rights which vary from state to state. Nothing in this warranty limits or restricts, or is intended to derogate from, any right or remedy which the purchaser or ultimate user of the product may have pursuant to Australian state and/or Australian federal consumer protection legislation, New Zealand Sale of Goods Act, Consumer Guarantees Act, Fair Trading Act or any other relevant and applicable New Zealand legislation or authority and where necessary shall so be read and construed.

TERMS AND CONDITIONS APPLICABLE INTERNATIONALLY

How long the warranty is effective Internationally

- 1) This Pentair Water product is warranted for 12 months for all parts from the date of the first consumer purchase. Should any parts fail as a result of such defects within the specified period, the part will be replaced free of charge. (This does not include travel charges, removal and reinstallation charges.)

Table of Contents

Page

1. Warnings	4
2. Models and technical information	4
3. Application	4
4. Installation	4
• Preparation for operation	
• Pump Protection	
• Electrical connections	
• Discharge	
5. Operations	5
6. Service and Maintenance	6
7. Troubleshooting	7
8. Exploded diagram-internal parts	
Warranty	10

1. Warnings



These instructions are a guide only. Users not familiar with pumping equipment should seek advice from people experienced in pump equipment and installation.



The pump operator must be provided with this owner's manual. This must be read before operation and followed during operation.



Do not run the pump without liquid. Always ensure the pump is submerged before operation. Do not allow the pump to continue running once the water supply is empty



The pump cannot be used to move inflammable or dangerous liquids



Isolate the pump electrically during installation or servicing



Do not operate the pump in an explosive environment or near combustible matter.



Make sure that there is a float switch or loss of prime switch that stops the pump when the water supply is empty .

2. Models and Technical Information

Technical Data	Model	7535	7556	11557
Inlet:		Screen		
Outlet:		1 1/4" BSP		
Stages		5	8	8
Max Discharge Pressure (m)		35	56	57
Maximum immersion		20m		
Minimum well diameter		100mm		
Water temp range		2°C - 40°C		
Max dimension of solids		2mm		
Maximum amount of sand		50 g/m ²		
Max cycles per hour		30 (equally spaced)		
Nominal power (kW)		0.6	0.75	1.1
Power Supply		230V - 1ø - 50Hz		
Run amps (Amperes)		3.0	3.3	3.0
Capacitor (µF)		12.5	16	16

Optional accessories

Presscontrol	Item Code 110680
Minipress	Item Code 707125

3. Application

Dominators are multistage submersible pumps. They are suitable for use in clean water without dissolved gasses. The pump components are suitable for use with potable water.

4. Installation

a) Preparation for operation

Read these instructions first

Inspect your pump for shipping damage. Report any damage to your Pentair Water dealer no later than 8 days from purchase date.

Ensure that the electrical supply has sufficient voltage and current capacity.

b) Pump Protection

Warranty of these pumps is void unless they are operated in accordance with this owners manual. Avoid using an electrical cable to lift or transport the pump. Use the nylon rope supplied or a stainless steel cable to support the pump. It is advisable to connect the electrical cable to the delivery line at three metre intervals.

It is advisable to fit automatic level controls to prevent the pump running without liquid, and a pressure gauge to verify operation.

4. Installation continued...

c) Electrical connections

Ensure that the pump is disconnected from the power supply during installation, or before moving or servicing the pump.

Dominator pumps are supplied with a unique Onga IEC weatherproof connector. Your Dominator pump kit will have all the necessary electrical connections to allow you to plug the electrical cord into a 10A General power outlet. The Dominator pump has a double ground contact to this connection, the pump is grounded when the plug is connected to a grounded power supply

The power cord is not a user servicable item. It must be replaced by the manufacturer using special tools

The pump is supplied with an in-built thermal circuit breaker with automatic reset.

All electrical work must be carried out in accordance with local regulations. The power supply must be fitted with a residual current device (earth leakage protection) with sensitivity of 30mA or less.

d) Discharge

The length and diameter of the discharge lines will affect the pressure and flow rate at which your pump operates. Care should be taken when selecting discharge pipe/hoses and fittings. Pressure ratings of all components must exceed the maximum pressure of the pump by an appropriate safety factor.

e) Dominator suction has been intentionally raised to alleviate sediment being pumped. to raise this height further, use 3" PVC pipe and insert into specially designed base.

5. OPERATION



Ensure that your pump is submerged before operating.

Connect discharge piping, and ensure that the suction is completely submerged. Connect to power and pressure control device (if required).



Do not submerge the pressure control device (if installed).



Do not submerge the electrical connectors.

6. Service & Maintenance

Under normal conditions DOMINATOR submersible pumps do not require any maintenance. In order to avoid possible failures, it is advisable to periodically check the pressure supplied and the current absorption. A decrease in pressure is a symptom of wear. An increase in current absorption is a sign of abnormal mechanical friction in the pump and/or motor.

If the submersible pump is not going to be used for long periods of time it should be emptied completely, rinsed with clean water and stored in a dry place.

Cleaning the filter

If the water supply is not perfectly clean, it may be necessary to clean the strainer with a steel brush to scrape the dirt accumulated on the external surface. It is also possible to clean the internal section of the strainer.

Loosen the screw that fixes the strainer to the body of the electropump and remove it. Scrape the dirt with a steel brush and rinse it with clean water.



Do not operate the unit without the inlet strainer

If this is not sufficient, have the hydraulic parts cleaned by an authorised service center.



Pumping water containing solids will reduce the life of the pump, and may affect warranty



Pumping chemicals or agricultural products voids warranty.



Do not pump hydrocarbons with this pump.



If the pump is not going to be used for a long period, it should be completely emptied, rinsed with clean, fresh water, and stored in a dry place.

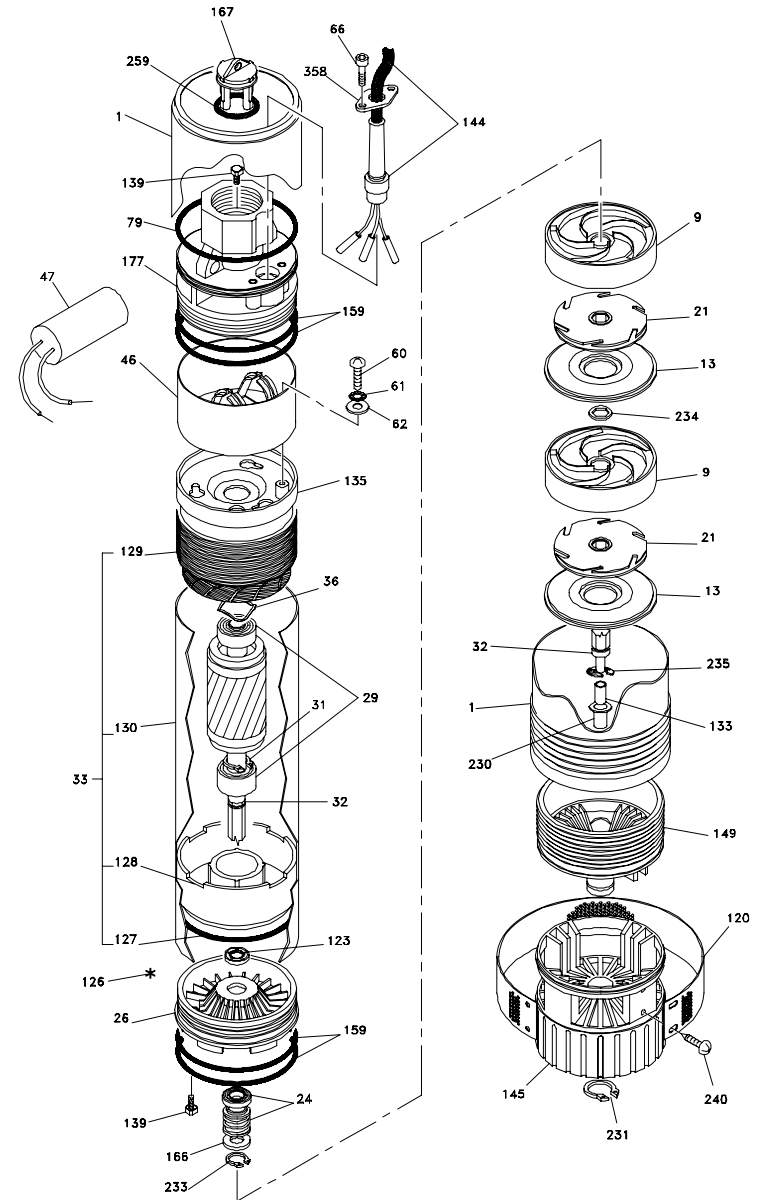
Always use original service parts as supplied and recommended by Onga. Failure to do so may void warranty.

7. Troubleshooting

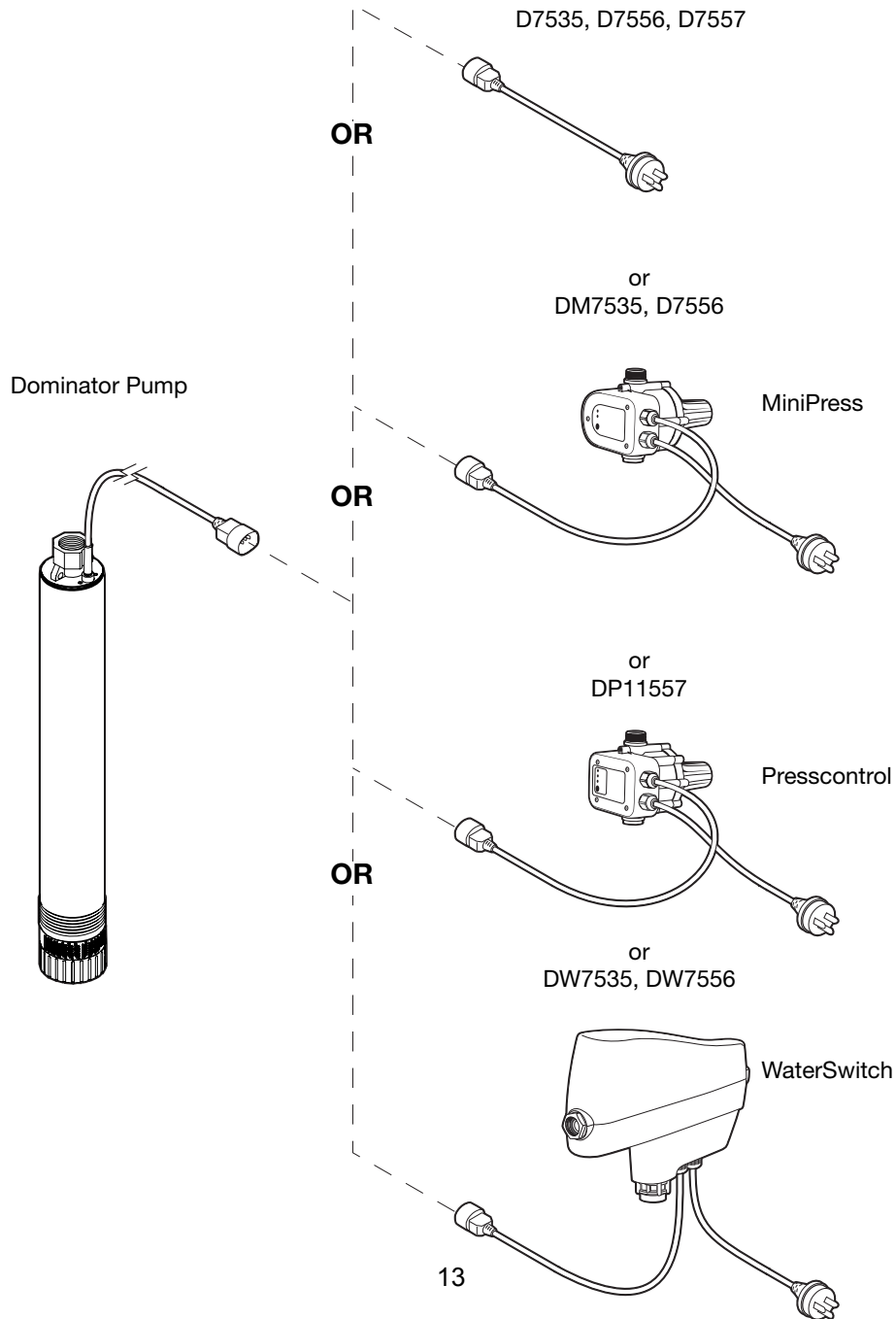
Problem	Possible cause	Suggested Solution
The motor will not run, no water is pumped	<ol style="list-style-type: none"> 1) No power supply 2) Motor protection tripped 3) Defective capacitor 4) Pump blocked 	<ol style="list-style-type: none"> 1) Check voltage at the supply, and check that the plug is connected securely 2) Wait for internal protection to reset. 3) Replace the capacitor. 4) Unblock the pump.
The motor runs, but no water is pumped.	<ol style="list-style-type: none"> 1) The pump is not submerged. 2) The suction strainer is blocked. 3) The check valve is blocked 	<ol style="list-style-type: none"> 1) Check that the liquid level has not dropped below the minimum level. 2) Clean the suction strainer. 3) Clean or replace the valve
The pump stops after running for a short period of time (Thermal overload)	<ol style="list-style-type: none"> 1) The power supply is unsuitable. 2) Solids are blocking the pump. 3) The liquid is too thick. 	<ol style="list-style-type: none"> 1) Check the supply voltage. 2) Have the pump disassembled and cleaned by an authorised dealer. 3) See your dealer for an alternate pump.

7. Exploded diagram - Internal parts

Ref	Description	Qty
1	Pump body	1.00
9	Diffuser	# of Stages
13	Diffuser cap	# of Stages
21	Impeller	# of Stages
24	Mecanical seal	1.00
26	Flange (Mechanical seal holder)	1.00
29	Bearing	1.00
31	Snap ring (Pump side)	1.00
32	Shaft (Including rotor)	1.00
33	Case (Including stator)	1.00
36	Ring	1.00
46	Capacitor Holder	1.00
47	Capacitor	1.00
60	Screw (Ground)	1.00
61	Washer (Ground screw toothed)	1.00
62	Washer (Ground screw plain)	1.00
66	Screw (Cable gland)	2.00
79	Gasket (Pump body)	1.00
120	Filter	1.00
123	Ring (Seal)	1.00
126	Lubricant	1.00
127	O-Ring (Lower bearing flange)	1.00
128	Flange (Lower bearing holder)	1.00
129	Stator (Single phase wound)	1.00
130	Motor body	1.00
133	Bushing (Ceramic)	1.00
135	Flange (Upper bearing holder)	1.00
139	Screw (Inspection)	2.00
144	Cable (Power ~ single phase w/grommet)	1.00
145	Base (Filter)	1.00
149	Flange (Suction)	1.00
159	O-Ring (Cover)	4.00
166	Washer (Seal compression)	1.00
167	Check Valve	1.00
177	Cover	1.00
230	Bearing (Bronze)	1.00
231	Snap ring	1.00
233	Snap ring	1.00
234	Ring (Anti-wear)	# of stages minus 1
235	Snap ring (Start up)	1.00
240	Screw (Wire cover)	2.00
259	O-Ring (Vent valve)	1.00
358	Flange (Cording clamp)	1.00



Dominator Kit



Installation Instructions

This quality Wall bracket has been designed to support the Onga Presscontrol or Onga Minipress when they are remotely mounted from the pump. Various mounting positions allow you to install this device thru 360° rotation and position the control panel in view and with access.

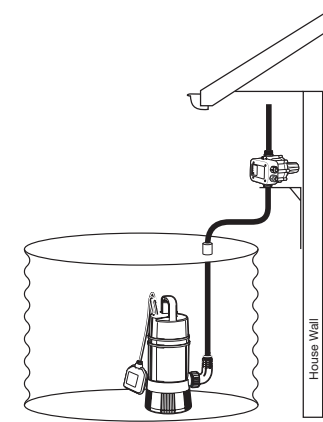
Wall Bracket kit (Presscontrol/Minipress)

Part Number 801447

Kit contents

1x Wall bracket

2x Fixing screws

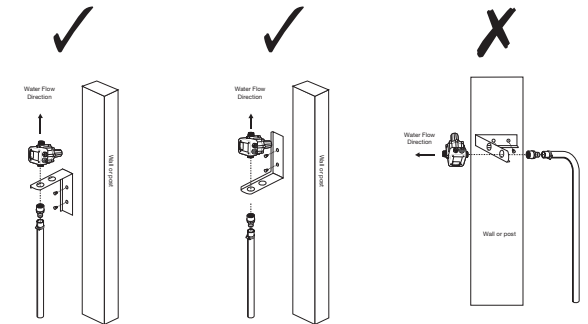
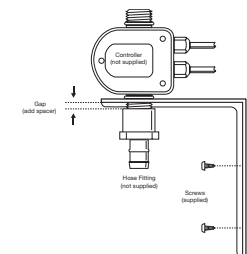


Use of Mounting Bracket

Where possible please mount Constant Pressure Control Unit out of weather and with control panel in vertical

Bracket Mounting Options

The control device must be fitted vertically as shown on diagram with arrow pointing vertical for correct and reliable function. Select the appropriate mounting hole for your chosen controller position.



Note: Depending upon the type of plumbing fitting selected, the pressure control device may not be firmly clamped to the wall bracket. We recommend a spacer (not supplied) be fitted where necessary

IMPORTANT

Please attach your sales invoice/docket here as proof of purchase should warranty service be required.

Please do not return Warranty - Retain for your records.

Purchased From

Purchase Date..... Serial No..... Model No.....



**Pentair
Water**

Pacific
Australia

Head Office
Pentair Water Australia Pty Ltd
Notting Hill Victoria, Australia
Tel: +61 3 9574 4000 Fax: +61 3 9562 7237
Email: Sales@pentairwater.com.au
www.pentairwater.com.au



Pentair Water New Zealand Ltd
Penrose Auckland New Zealand
Tel: +64 9579 6254 Fax: +64 9579 6497
Email: auckland@pentairwater.com.au

Americas

Pentair, Inc.
www.pentair.com

Europe

Pentair Pumps S.p.A
www.pentairpumps.it

Asia

China
www.pentairwater.com

India
www.pentairwater.com

© information contained here-in remains the property of Pentair Water Pty Ltd. Any reproduction, display, publication, modification or distribution is strictly prohibited without the prior written permission of Pentair Water Pty Ltd.

Disclaimer: Every endeavour has been made to publish the correct details in this data sheet. No responsibility will be taken for errors, omissions or changes in product specifications. Pentair Water reserves the right to change specifications

L100165 0707